

RMQ THE SMART WASTE BIN FOR ACCURATE WASTE COLLECTION RATES

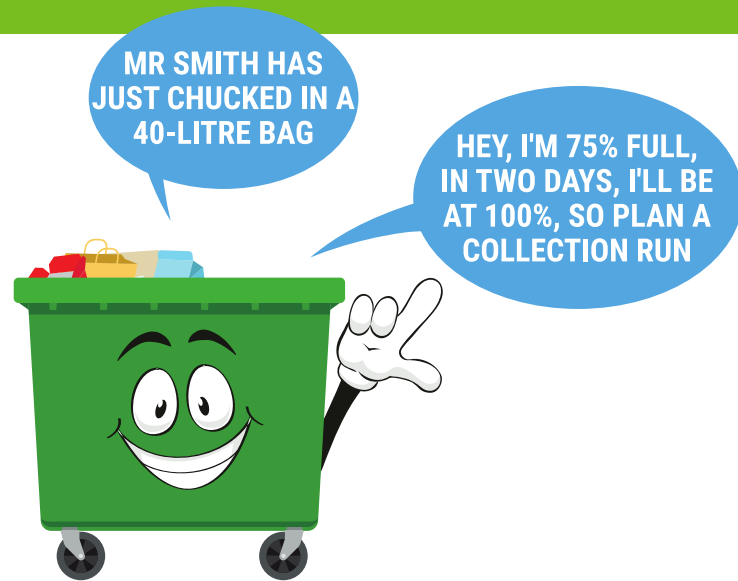
RMQ, innovation in action

RMQ by Adambì is the most **advanced and intelligent waste bin** on the market. RMQ offers:

- An **accurate quantification** of waste conferred by each individual user;
- **Constant monitoring** of the fill level of the bin.

At the same time, this smart waste bin also avails of a unique system for:

- The **application of a precise rate** ("Pay As You Throw");
- The **efficiency of the collection service** (with optimisation of the collection routes).



TRADITIONAL WASTE COLLECTION

VS

RMQ

NO QUANTIFICATION OF WASTE



PRE-ESTABLISHED COLLECTION FREQUENCY



ACCURATE QUANTIFICATION OF WASTE



OPTIMISED COLLECTION FREQUENCY BASED ON THE FILL LEVEL



ADVANTAGES FOR WASTE MANAGEMENT COMPANIES

- Application of a precise rate
- An increase in the percentage of separated waste collection and a consequent reduction in disposal costs

- A reduction in collection costs (fewer collections, lower fuel costs and less wear-and-tear on vehicles)
- More efficient use of staff
- Lowered environmental impact
- Reports documenting the collections effectuated

ADVANTAGES FOR CITIZENS

- More equitable bills commensurate with the actual waste production

- Improvement of urban orderliness (no overflowing bins)

How RMQ works

1. **Identifies the user** through an electronic key (RFID tag, magnetic card or smartphone);
2. Accurately detects **the amount of waste** conferred by the individual user;
3. **Measures and communicates the fill level** at predetermined intervals so as to optimise collection routes;
4. Interfaces with the Adambì **monitoring software** or with third-party software for information exchange;
5. **Periodically communicates the additions** of each individual user.

RMQ IS THE WINNER!

To illustrate all **advantages offered by RMQ**, let's compare the benefits of collection via RMQ with those of the most common waste accounting systems currently in use – the volumetric chute for curbside collection and bins (or bags) with RFID tags for waste collection.

RMQ VS VOLUMETRIC CHUTES

RMQ is able to monitor and quantify waste **without additional mechanical moving parts** for opening/closing the container or limiting the volume of waste introduced.

The **patented multi-sensor optical technology** of RMQ is produced is able to **detect and quantify the waste introduced in accordance with predefined thresholds** in agreement with the management (*typically being 4 - small 15 litre bags, medium 30-40 litre bags, large 110 litre bags and oversized bags greater than 150 litres*).

This makes RMQ **easy to use**, especially since **users do not have to change their habits** in throwing out waste (including waste of medium bulk) with the same methods – with the exception of opening the bins with an electronic key. This **reduces the likelihood of improper disposal outside the container**.

The absence of mechanical parts also means **no jamming or relative maintenance costs**.

VOLUMETRIC CHUTE

DEPOSITS LIMITED TO THE PRE-ESTABLISHED VOLUME ACCORDING TO THE SIZE OF THE CHUTE (FOR EXAMPLE, 40 LITRES)



MECHANICAL OPENING VIA A HANDLE OR PEDAL



VS

RMQ



NO VOLUMETRIC LIMITS FOR CONFERMENT



OPENING AS PER STANDARD CURBSIDE SKIPS (NO ADDITIONAL MECHANICAL PARTS)

ADVANTAGES FOR WASTE MANAGEMENT COMPANIES

- Possibility of defining the volume measurement for conferment in terms of pre-established thresholds
- Improvement of urban orderliness (removal of abandoned waste)

ADVANTAGES FOR CITIZENS

- Every user can throw out bags of any size
- Possibility of throwing out waste of medium bulk

- No jamming or relative maintenance costs
- Improvement of urban orderliness (removal of abandoned waste)

- No need for users to change their behaviour (except for opening with an electronic key)

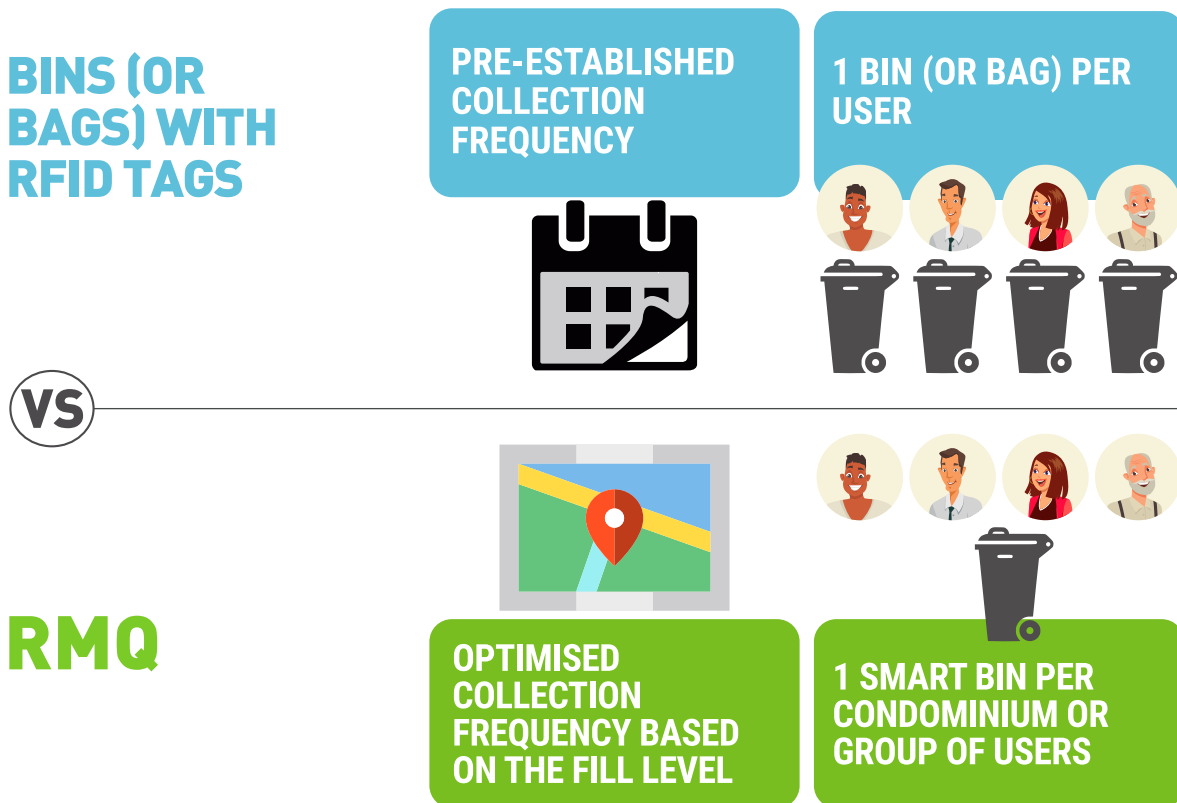
RMQ VS BINS (OR BAGS) WITH RFID TAGS

The main advantage of using RMQ instead of a door-to-door collection system with bins or bags with RFID tags is **economic**.

Thanks to the **optimisation and efficiency of the collection process** – and the consequent reduction in the amount of emptying required, the cost of fuel, vehicle maintenance and personnel costs – **the economic benefits are quite substantial indeed**.

Yet, RMQ is not only an alternative but represents a **valid support** to classic door-to-door collection with RFID tags. In the context of condominiums or high-concentration housing, the classic door-to-door system is often poorly received by citizens due to the unsightly placement of bins or bags in the areas adjacent to the houses and the collection frequencies that limit the conferment in terms of days and set times.

Thanks to the use of RMQ, all of these problems would be resolved by **improving the quality of service for citizens and reducing operating costs** (less equipment required, fewer collections and lower personnel costs).



➤ ADVANTAGES FOR WASTE MANAGEMENT COMPANIES

- A reduction in collection costs (fewer collections, lower costs for fuel and personnel)

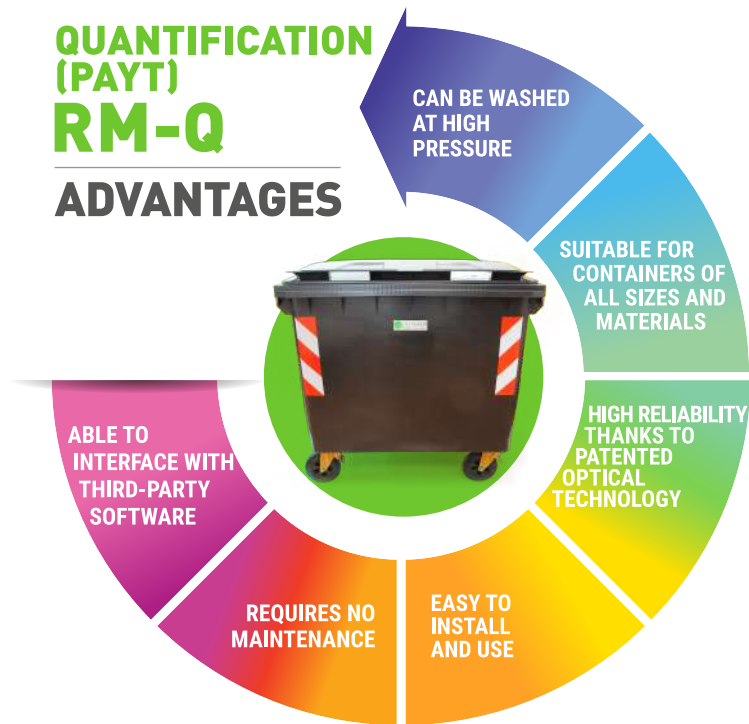
- Reduced operating costs

➤ ADVANTAGES FOR CITIZENS

- Improvement of urban orderliness (no bins in front of individual homes)

- Users can throw out waste when they prefer – and not just at set times

RMQ, SO MANY ADVANTAGES!



RMQ, A COMPLETE OFFERING!



(*) compared to other waste accounting systems

